

RETAIL MESSAGING CLIPS AND CLAMPS



Suction Cup with
90° Wing Grip
nu DISPLAYS

Suction Cup with
Flat Wing Grip
nu DISPLAYS

Suction Cup with
Flat Wing Grip
nu DISPLAYS

Roll Clamp with
Wing Grip
nu DISPLAYS

Screw on Clamp
with Wing Grip
nu DISPLAYS

CLAMPS

Media, banners, product and pricing messages are secured within the clear wing grip which fits into all Nu Displays clips and clamps. Each clamp is designed to fit a certain shelf or shop-fitting system including standard retail shelving, glass shelves, wire baskets, till poles and all in-store refrigerators and freezers. The simple application of each clamp and media into the wing grip allows for quick and easy updating of media, product descriptions and pricing. Co-extrusion options are available on all of the below mounts, in place of the wing grip.

Roll Clamp With Wing Grip

Attaches to most shelves and is perfect for lightweight applications.

Product Code

RCWG 01



Slimline G Clamp With Wing Grip

Screw on clamp for heavier applications. Screws onto shelf securely and fits a variety of shelves.

Product Code

SGCWG 01



Screw On Clamp With Wing Grip

A simple, highly secure clamp which is screwed onto shelf with a bolt and nut through the standard drilled shelf edge holes. The screw on clamp is available in a transparent polycarb resulting in an almost 'invisible' media application on-shelf.

Product code

SOCWG 01



Parasite Wing Grip

Simple application of media and product pricing or messaging onto wire shelves, free standing units and dump-bins.

Product code

PWG 01



Wing grip flat mount

The mount is attached to poles or shelf frames using two cable ties. Neat and simple application for till point messaging.

Product code

WGFM 01



Glass Shelf Clamp with Wing Grip

Attaches securely to glass shelving with a 40mm suction cup.

Product code

GSCWG 01



Suction Cup Wing Grip

Easy application of media to glass surfaces and ideal for upright fridge doors in-store.

Product code

SCWG 01



MESSAGE CLIPS

The message clip system is designed to hold smaller, lighter media and in-store messaging and is available for a wide variety of shelf fronts and merchandise solutions. The media is attached to each clamp through a punched hole which secures the media into the clip. Message clips are produced in lightweight, clear acetal to ensure that they do not detract from the media

Shelf Message Clip

Fitted between the PI label strip and to the top of the shelf.

Product code

SMC 01



Fridge Message Clip

Fits snugly into the concave aluminium shelf front found on many in-store open refrigerators.

Product code

FMC 01



Parasite Message Clip

Used to apply media to wire baskets, free-standing units and dump-bins.

Product code

PMC 01



Suction Cup Message Clip

Applies to glass and smooth surfaces.

Product code

SCMC 01



Universal Message Clip

Used with any of the Nu Display clamps.

Product code

UMC 01



Horizontal Message Clip

Horizontal application works on glass and wire shelves.

Product code

HMC 01



ESL Message Clip

Message clip which fits into the Electronic Shelf Label tracking onto the shelf-front.

Product code

ESLMC 01



Keyhole Message Clip

Attached to peg boards and shelving systems with key-hole fastening options.

Product code

KHMC 01



CO-EX MESSAGE CLIPS

Co-Ex Message clips are super simple to apply and can be inserted into the PI opening whether installed to open at the top or bottom of the shelf-front. Co-Ex message clips grip the media without the need for any punched holes so media is easily changed.

Co-Ex Shelf Message Clip

Easily slipped onto PI label openings (from the top or bottom) for securing light-weight signage.

Product code

CXMC 01



ESL Co-Ex Message Clip

Co-Extrusion message clip which fits into the Electronic Shelf Label tracking.

Product code

CXESLMC 01



MAGNETIC CO-EX MEDIA HOLDERS

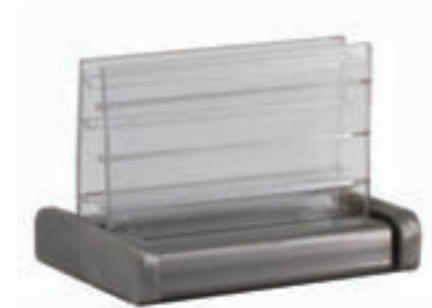
These media holders can be attached to any metal surface and can be used vertically or horizontally. The co-extrusion accommodates various sizes and substrate thickness. A super strong magnet ensures that in-store traffic does not move or damage the media placed into the magnetic co-ex.

50mm Magnetic Co-Ex With Large Rigid Co-Ex

Larger and longer co-ex to hold thicker and heavier media. The rigid co-ex provides an immovable 90 degree installation for the media.

Product code

MXC-5LR



50mm Magnetic Co-Ex With Large Flexi Co-Ex

Larger and longer co-ex to hold thicker and heavier media. The flexi co-ex results in the media being able to move or flex with the media holder.

Product code

MCX-5LF



50mm Magnetic Co-Ex With Standard Rigid Co-Ex

Perfect solution for most in-store media requirements including shelf banners and wings. The rigid co-ex provides an immovable 90 degree installation.

Product code

MCX-5SR

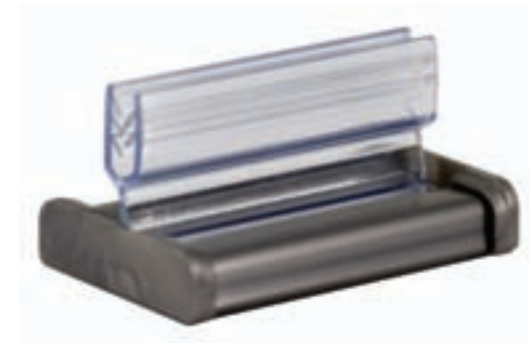


50mm Magnetic Co-Ex With Standard Flexi Co-Ex

Perfect solution for most in-store media requirements including shelf banners and wings with the additional ability to hinge with the media.

Product code

MCX-5SF

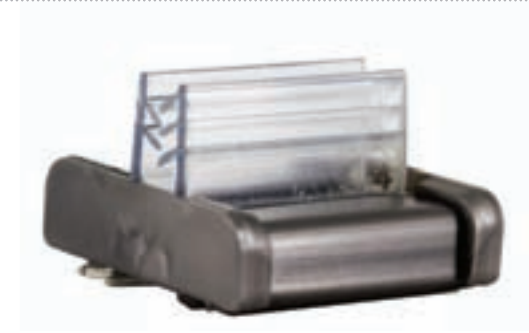


30mm Magnetic Co-Ex With Standard Rigid Co-Ex

Shorter co-ex to hold smaller media. The rigid co-ex provides an immovable 90 degree installation for the media.

Product code

MCX-3SR



30mm Magnetic Co-Ex With Standard Flexi Co-Ex

Shorter co-ex to hold smaller media, with the additional ability to hinge with the media.

Product code

MCX-3SF

